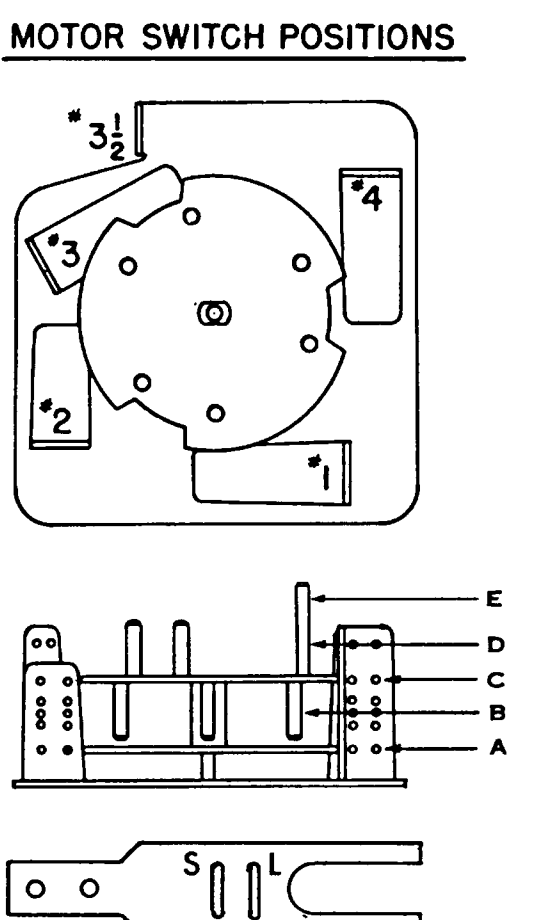


- "RELAYS"**
- | INDEX | NO. | COIL | TYPE | CONTACTS | USE |
|-------|-----|--------|--------|------------|---------------------------------------|
| 3E | A | A-9740 | AG. | 1A, 3C | ALTERNATING RELAY |
| 2E | B | A-9735 | AG. | 4A | POP BUMPER RELAY |
| 3E | C | A-9735 | AG. | 3A | ADD BONUS UNIT RELAY |
| 5E | D | A-9740 | AG. | 3A, 1C | BALL GATE & SUPER BONUS CONTROL RELAY |
| 3E | E | A-9735 | AG. | 3A, 1B | "0" RELAY CONTROL RELAY |
| 6E | F | A-9740 | AG. | 2A | ADD LIGHTBOX ADVANCE UNIT RELAY |
| 2E | G | A-489 | AS. | 1A, 1 DISC | HOMESIDE LIGHT ADVANCE UNIT RELAY |
| 8E | H | A-9738 | AG. | 3A, 3B | TILT HOLD RELAY |
| 11E | J | A-9735 | AG. | 5A, 1B | TARGET BANK RESET RELAY |
| 7E | K | A-9740 | AG. | 2A, 1C | 100,000 SCORE RELAY |
| 6E | L | A-9735 | AG. | 4A | 10,000 SCORE RELAY |
| 5E | M | A-9735 | AG. | 4A | 1000 SCORE RELAY |
| 4E | N | A-9735 | AG. | 4A | 100 SCORE RELAY |
| 9E | O | A-9735 | AG. | 5A, 1B | BALL RETURN RELAY |
| 11E | P | A-9738 | AG. | 3A, 1C | CREDIT RESET RELAY |
| 8E | Q | A-9735 | AG. | 5A | BONUS SCORE RELAY |
| 11E | R | A-9738 | AG. | 2A, 2C | HOLD RELAY |
| 12E | S | A-9740 | AG. | 5A, 1B | START RELAY |
| 8E | T | A-9742 | AG. | 1B | TILT RELAY |
| 4E | U | A-9735 | AG. | 3A | 500 SCORE RELAY |
| 12E | V | A-9740 | AG. | 5A, 1B | CREDIT RESET RELAY |
| 13E | W | A-9740 | AG. | 5A, 1B, 1C | CREDIT CONTROL RELAY |
| 12E | X | A-9740 | AG. | 4A | CREDIT BUTTON RELAY |
| 12E | Y | A-489 | AS. | 3A | CREDIT HOLD RELAY |
| 14E | Z | A-9740 | AG. | 5A, 1C | RESET RELAY |
| 10E | AB | A-3891 | INTER. | 3A, 1C | RESET COMPLETED RELAY |
| 10E | ABR | A-3891 | LOCK | 3A, 1C | RESET COMPLETED RELAY |

- "OTHER COILS USED"**
- | INDEX | COIL | DESCRIPTION |
|-------|---------|-------------------------------------|
| 1E | A-5141 | BUTTON COILS |
| 1E | A-5194 | KICKING RUBBER COILS |
| 7E | A-4893 | POP BUMPER COILS |
| 3E | A-12092 | CHIME COILS |
| 3E | A-1496 | ADD BONUS UNIT COIL |
| 10E | A-5194 | SUBTRACT BONUS UNIT COIL |
| 5E | A-6698 | BALL GATE COIL |
| 6E | A-1496 | ADD LIGHTBOX ADVANCE UNIT COIL |
| 9E | A-5194 | SUBTRACT LIGHTBOX ADVANCE UNIT COIL |
| 8E | A-5143 | KNOCKER COIL |
| 8E | A-1496 | BALL RETURN COIL |
| 9E | A-1496 | ADD BALL COUNT UNIT COIL |
| 9E | A-5194 | SUBTRACT BALL COUNT UNIT COIL |
| 10E | A-9154 | SCORING UNIT COILS |
| 11E | A-7677 | COIN LOCKOUT COIL |
| 14E | A-5196 | TARGET BANK RESET COILS |
- "WORD ABBREVIATIONS"**
- R. O. = ROLLOVER
- POS. = POSITION
- SW. = SWITCH
- SUBT. = SUBTRACT
- ADJ. = ADJUSTABLE
- SPEC. = SPECIAL
- SEQ. = SEQUENCE
- "COLOR CODE ABBREVIATIONS"**
- BL = BLUE SL = SLATE
- BR = BROWN YEL = YELLOW
- BLK = BLACK WH = WHITE
- GR = GREEN MAR = MAROON
- OR = ORANGE PUR = PURPLE
- EXAMPLE: BL-WH = BLUE WITH A WHITE TRACER. BL & WH = BLUE AND WHITE MOTTLED.



POSITION	A	B	C	D	E
#1	3A	1A	1A, 3B, 1C		
	"S" POS.		"S" POS.		
#2		1A, 3B	2A		
			"L" POS.		
#3		2A			
			"S" POS.		
#3 1/2					
#4	2A		4A	1B	
	"S" POS.		"S" POS.		

CHANGE MADE TO ELIMINATE EXTRA COUNT ON THE COUNTER IF ADJUSTMENT PLUS IS IN 1 COIN 2 PLAYS POSITION AND CREDIT BUTTON IS PUSHED.

1-18-72
R.H.M.

TEXAS RANGER

RHM-11-24-71-338

D. Gottlieb & Co.
165 W. LAKE ST.
NORTHLAKE, ILL. 60164

